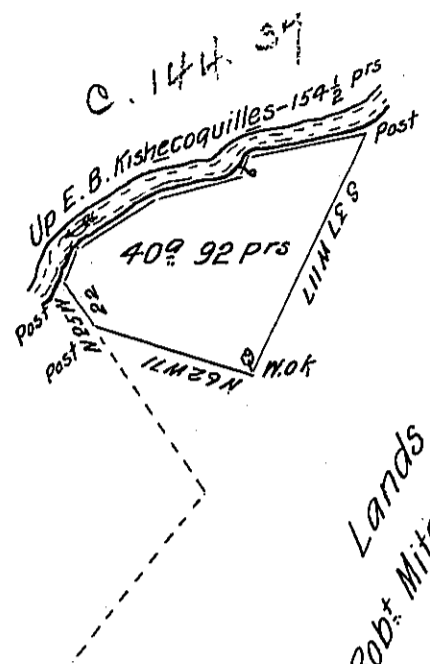


Up Creek  
Cours- & Distance

N 30 E	14
N 70 E	41
N 85 E	36
N 50 E	10
N 85 E	53½
Total	154½ P <sup>rs</sup>



James Reeds Land



Lands Survey<sup>d</sup> for  
Rob<sup>t</sup> Mitchell & John Whorrry

Draught of a tract of land Situate in Armagh township (formerly Cumberland) now Mifflin County. Containing Forty acres and 92 perches and the allowance of Six P<sup>er</sup> Cent for Roads &c. appears Survey<sup>d</sup> by William Maclay late Deputy Surveyor. In pursuance of a Warrant granted to William Galloway the 23<sup>d</sup> day of September 1773.

Examined and Corrected the 14<sup>th</sup> day of July 1802.

P<sup>r</sup> William Harris D.S.

To Samuel Cochran Esquire  
Surv<sup>r</sup> Gen<sup>l</sup> of Pennsylvania.

IN TESTIMONY that the above is a copy of the original remaining on file in the Department of Internal Affairs of Pennsylvania, made conformably to an Act of Assembly approved the 16th day of February, 1833, I have hereunto set my Hand and caused the Seal of said Department to be affixed at Harrisburg, this twenty ninth day of January 1906

*Geo. D. Brown*  
Secretary of Internal Affairs.